

## TECHNICAL DATA

### TYPE

LOUP floodlight with low wind resistance. Comprehensive range available in Two sizes with extensive optical and light distributions from 1000W up to 12000W to cover all applications. Can be tilted in all directions thanks to its fixing galvanize and painted bracket.

### CHARACTERISTICS

LEDs: 5050

Nomial efficacy: 160 lm/W

Maximum LED: 1000mA

Lifetime L90B10: >50,000 hours

Luminous flux and efficacy at 5700°K and CRI>80

Luminous flux tolerance <+/-3%

Values may be subject to change du LED binning.

### OPENING/BEAM

High efficiency Ra>80 LED. 90°

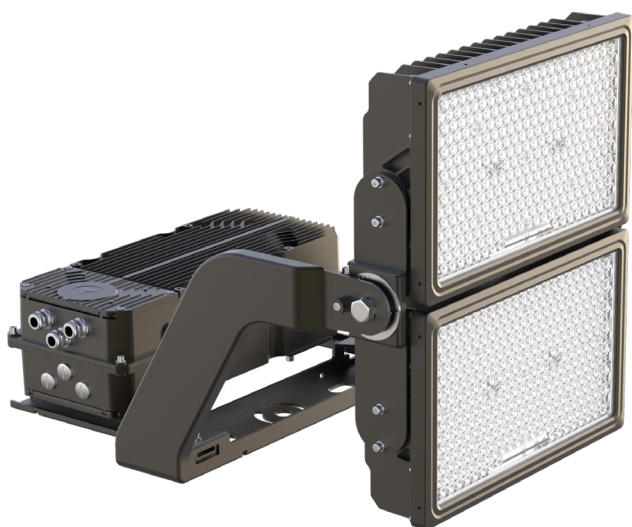
### MATERIAL

Die-cast aluminium, Transparent 4mm

tempred-Glass

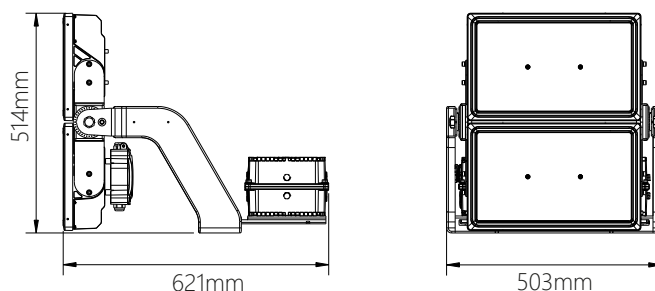
Aluminum frame

Steel Galvanized and painted bracket



|                           |               |
|---------------------------|---------------|
| <b>Model:</b>             | Loup          |
| <b>Format:</b>            | Rectangular   |
| <b>Location:</b>          | Exterior      |
| <b>Wattage:</b>           | 1000W         |
| <b>Materials:</b>         | Aluminium     |
| <b>Led Color:</b>         | 5700K         |
| <b>Product Dimension:</b> | 503*514*621mm |
| <b>IP Code:</b>           | 67            |
| <b>Fixation:</b>          | Surface       |
| <b>CRI :</b>              | 80            |
| <b>Lumen Output:</b>      | 160000LM      |
| <b>Frequency:</b>         | 50/60 Hz      |
| <b>Beam Angle:</b>        | 90°           |
| <b>Net Weight:</b>        | 32Kgs         |

## DIMENSION DRAW



# OUTDOOR